



ASHBRIDGE

CONSTRUCTION



About Ashbridge Construction



1

25 Years of Civil Construction Excellence

- Ashbridge Construction has twenty-five years of proven expertise as Western Australia's trusted civil construction contractor.
- We provide comprehensive solutions across the commercial, industrial, and mining sectors.
- Our extensive experience covers metropolitan projects and remote mining sites in Western Australia and South Australia.
- This longevity demonstrates a steady capacity to fulfil complex project requirements and adapt to changing industry standards.
- Our reputation is founded on providing structural integrity, completing projects on schedule, and offering exceptional service.

2

Regional Reach and Sector Focus

- Providing services for commercial developments, industrial facilities, and mining operations across Western Australia and South Australia.
- Thorough knowledge of regional conditions, regulations, and logistics specific to these areas.
- Established networks guarantee dependable supply chains and a skilled workforce.
- A hands-on management approach from planning to project completion.
- Prioritise quality and teamwork to achieve the highest industry standards.

Ashbridge Construction has 25 years of proven civil construction expertise, delivering trusted solutions across commercial, industrial, and mining sectors in Western Australia and South Australia. Their extensive local knowledge and well-established networks ensure efficient, high-quality project delivery tailored to each client's needs.

Core Services Overview



FRP Works

Specialist formwork, reinforcement, and concrete pouring for all structural needs, guaranteeing quality and durability.



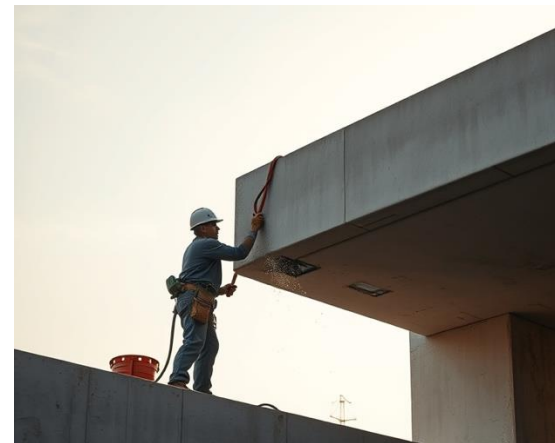
Drainage Solutions

Stormwater management, industrial drainage, and dewatering systems designed to handle complex site requirements efficiently.



Earthworks

Comprehensive excavation, site preparation, grading, and terrain management with GPS-guided earthmoving machinery.



Remedial Works

Structural repairs, concrete restoration, and asset rehabilitation utilising advanced techniques for long-term durability.

- ▶ Ashbridge Construction provides expert formwork, drainage, earthworks, and remedial services across commercial, industrial, and mining sectors with customised, high-quality solutions.

Earthworks & Site Preparation



Earthworks Capabilities	Specialised Equipment	Skilled Labour Services	Plant & Equipment Hire
<ul style="list-style-type: none">• Bulk earthworks and site preparation customised to the project's requirements.• Accurate excavation for foundations and service installations.• Cut and fill activities to ensure precise site levelling.• Site remediation and management of contaminated soil.	<ul style="list-style-type: none">• GPS-enabled earthmoving equipment for precise grading and excavation.• Advanced compaction and testing equipment to meet compliance standards.• Efficient dewatering systems for on-site water management.• Temporary works and shoring systems for safe construction support.	<ul style="list-style-type: none">• Skilled formwork carpenters specialised in structural frameworks.• Certified steel fixers ensuring reinforcement integrity.• Experienced concreters delivering quality service finishes.• Certified equipment operators ensure safe machinery handling.	<ul style="list-style-type: none">• Concrete pumping equipment for effective concrete delivery.• Formwork systems and accessories customised to project specifications.• Lifting and handling equipment for secure material transportation.• Earthmoving machinery, including excavators and loaders.

► Ashbridge Construction provides comprehensive earthworks and site preparation services, utilising specialised equipment and skilled labour to ensure solid foundations and efficient project delivery tailored to diverse project requirements.



Ashbridge Construction offers a comprehensive range of concrete services tailored to meet high industry standards for durability and quality. Their expertise spans fibre reinforced paving to advanced concrete techniques, providing customised solutions for diverse construction needs.

1 Fibre Reinforced Concrete (FRP)

- Specialised concrete with fibre reinforcement for improved durability and longevity.
- Perfect for busy industrial and transport settings needing tough surfaces.
- Enhances structural strength and decreases cracking and maintenance requirements.

3 Calcium Chloride Concrete (CCC)

- Uses calcium chloride additives to accelerate concrete curing and strength gain.
- Suitable for projects with tight timelines requiring rapid setting and early strength development.
- Enhances workability and surface finish quality under various environmental conditions.

2 Structural Concrete

- Includes foundations, columns, beams, slabs, and walls for robust structural support.
- Designed to meet rigorous engineering and safety standards for commercial, industrial, and mining sectors.
- Ensures long-term durability and load-bearing capacity in demanding environments.

4 Advanced Concrete Services

- Options for high-strength concrete up to 80MPa for specialised structural needs.
- Self-consolidating concrete (SCC) for complex shapes and confined reinforcement areas.
- Coloured, decorative concrete and exposed aggregate finishes for both aesthetic appeal and functional use.
- Industrial floor hardeners and specialised pumping services for difficult access conditions.

Comprehensive Waterproofing Services



Ashbridge Construction offers advanced waterproofing solutions for basements, foundations, and specialised above-ground applications using innovative materials and systems. Their expertise ensures long-lasting protection against water ingress and environmental exposure across various infrastructure projects.

Basement & Foundation Systems

- Negative and positive waterproofing systems to prevent water ingress from soil and groundwater.
- Applying membrane waterproofing to the foundation wall to safeguard structural integrity.
- Slab waterproofing and vapour barriers to prevent moisture transmission.
- Groundwater management and drainage solutions to keep foundations dry.
- Tanked waterproofing systems for comprehensive basement protection against hydrostatic pressure.

Advanced Materials

- Use of crystalline and bentonite waterproofing systems providing both chemical and physical barrier properties.
- Drainage cavity systems combined with protection boards to improve waterproofing durability.
- Applying waterproofing to pump chambers to protect vital infrastructure components.
- Integration of liquid membranes, including single- and two-component formulations, for flexible and robust protection.
- Sheet membranes like bitumen, EPDM, and TPO offer dependable waterproofing for various surfaces.

Specialised Above-Ground Applications

- Bridge deck and tunnel waterproofing ensuring long-lasting durability against heavy traffic and environmental exposure.
- Car park and stadium security systems built to endure heavy usage and adverse weather conditions.
- Industrial facility waterproofing customised for intricate structures and operational requirements.
- Self-adhesive membrane systems for efficient and effective waterproofing installation.
- Vapour barriers and composite systems to manage moisture and prolong asset lifespan.

Specialised Remedial Services



Ashbridge Construction provides comprehensive concrete remediation services, using advanced repair techniques and prevention strategies to restore and prolong the life of concrete structures. Their expert team addresses all types of deterioration with state-of-the-art materials and methods, ensuring long-term structural integrity and protection.

Concrete Remediation Process

- Identification and assessment of concrete deterioration, including spalling and exposure of steel reinforcement
- Rust removal using both mechanical and chemical methods to ensure thorough cleaning.
- Application of corrosion inhibitors and primers for protecting reinforcing steel
- Reconstruction of structural concrete using high-performance repair mortars to enhance durability.
- Applying a protective coating to prevent future damage and environmental factors.

Advanced Repair & Prevention Techniques

- Use of electrochemical treatments for reinforcement protection and corrosion management
- Cathodic protection systems installed to prevent ongoing deterioration.
- Structural reinforcement using carbon fibre for increased durability
- Concrete replacement using high-performance materials tailored to project requirements
- Injection grouting methods for void filling and structural reinforcement to prolong lifespan.

Quality Assurance & Safety Commitment



Quality Management Systems



Comprehensive quality management guarantees superior results. All work complies with or exceeds Australian Standards. Strict inspection, testing, and customised systems meet client needs.

Safety Management Systems



The Zero Harm Philosophy prevents injuries and incidents. Safety protocols, continuous training, risk management, and strong leadership promote ongoing safety improvements.

Sustainable and Community Practices



Dust & noise control minimise community impact. Sustainable methods reduce environmental footprint. Safety & quality protect workers & community.

Ashbridge Construction upholds rigorous quality management and safety systems aligned with Australian Standards, ensuring superior project outcomes and a zero-harm workplace.

Ashbridge Construction: Strengths and Capabilities



Company Overview

- Management team with decades of combined experience in civil construction.
- In-depth knowledge of Western Australian conditions and regulations.
- Expertise enables efficient project delivery and proactive problem-solving.
- Strong leadership ensures smooth coordination and risk management.
- Comprehensive service offering from initial design to final concrete finishing.

Challenges in Civil Construction

- Civil construction projects in WA require deep knowledge of local regulations, making leadership experience vital.
- Coordinating multiple contractors often leads to inefficiencies, communication breakdowns, and increased risks.
- Maintaining rigorous quality and safety standards is challenging, especially with strict Australian Standards.
- Meeting evolving client requirements demands continuous adaptation and innovative approaches.

Ashbridge Construction's Solutions

- End-to-end construction solutions, eliminating the need for multiple contractors and ensuring seamless coordination.
- Ongoing remedial maintenance for long-term asset durability and client satisfaction.
- Rigorous quality and safety processes on all projects, with robust systems for compliance with standards.
- Investment in latest techniques and materials, using advanced methods to improve efficiency and durability.

▶ Ashbridge Construction combines decades of leadership experience with a comprehensive service offering, rigorous quality assurance, and a commitment to innovative solutions, ensuring efficient project delivery and high client satisfaction.

Recent Major Projects Overview



Thornlie-Cockburn Line (2023)



Cats Construction & CPB Contractors engaged Ashbridge for FRP services on Perth's 14.5km METRONET rail project, delivering quality formwork, reinforcement & concrete solutions.

Alkimos Train Station (2023)



Worked with Calroc Civil, FSC Civil, TNE Civil & CPB Contractors on station platforms & structural walls, providing precision concrete pouring & integration with transport infrastructure.

Thomas Road Grade Works (2022)



Talco Group, Laing O'Rourke & MRWA commissioned Ashbridge for FRP & waterproofing on 2 MRWA underpasses & 2 bridges, enhancing safety & connectivity in Perth's south-east.

Mount Keith Mine Site (2022)



West Force & BHP engaged Ashbridge for civil works & precision concrete pouring at a key nickel mining site, adhering to strict safety & environmental protocols.

Ashbridge Construction has successfully delivered complex infrastructure projects across Western Australia, demonstrating expertise in civil construction and specialised services for major contractors.

METRONET Thornlie-Cockburn Line Project



Project Overview

- FRP services for the 14.5 km METRONET Thornlie-Cockburn Line in Perth.
- The project was valued at \$900,000 with Cats Construction and CPB Contractors.
- Scope: platforms, foundations, retaining walls, and key structures.
- Precise concrete pouring and high-strength reinforcement installation.

Project Challenges

- Advanced formwork & concrete solutions were needed for structural integrity & durability.
- Strict safety protocols demand a zero-harm approach and continuous safety training.
- Integration with existing transport infrastructure requires precise scheduling.
- High-quality finishes were crucial for the durability and standards of public transport.

Ashbridge Construction Solutions

- Provided FRP services with skilled formwork, reinforcement, and concrete pouring for complex requirements.
- Implemented strict safety management and ongoing training for safety excellence.
- Collaborated with CPB Contractors to ensure smooth integration and uphold the project schedule.
- Applied quality control to meet or exceed Australian Standards for durability infrastructure.

▶ Ashbridge Construction provided comprehensive FRP services for the METRONET Thornlie-Cockburn Line, ensuring high-quality, long-lasting infrastructure for Perth's growing rail network. Their expertise in concrete and reinforcement supported strict safety and engineering standards.

Alkimos Train Station Project



The Alkimos Train Station project showcased Ashbridge Construction's expertise in delivering complex public transport infrastructure with precision concrete pouring, advanced engineering solutions, and strict adherence to safety and quality standards, ensuring a durable and high-quality facility for Perth's growing transport network.



Project Overview

- Construction of station platforms and structural walls at Nicholson and Ranford Roads.
- Precise concrete pouring for foundations and retaining walls.
- Complex engineering demands adhering to strict safety protocols.
- Infrastructure built to meet durability and sustainability standards.

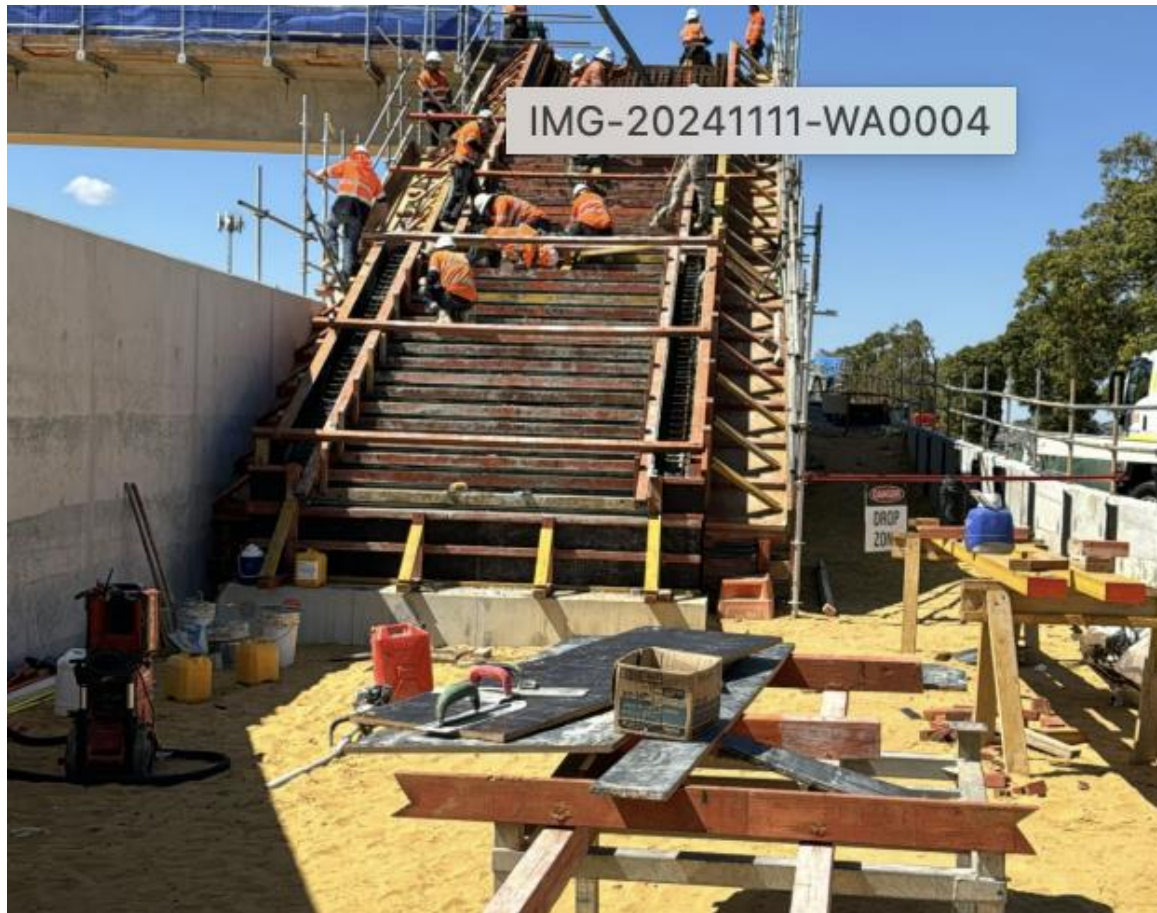
Engineering Challenges

- Managing complex engineering requirements for station platforms and structural walls to ensure stability and durability.
- Adhering to strict safety protocols in a busy construction environment with multiple stakeholders.
- Coordinating advanced formwork and concrete solutions while integrating with existing transport infrastructure.
- Meeting high-quality finish requirements suitable for a public transport facility with heavy daily use.

Construction Solutions

- Utilised advanced formwork and concrete pouring techniques to achieve precision and structural integrity.
- Implemented rigorous safety protocols and site management to protect workers and maintain compliance.
- Integrated construction seamlessly with existing transport infrastructure to ensure operational continuity.
- Delivered high-quality finishes meeting public transport standards, ensuring long-term durability and aesthetic appeal.

Thomas Road Grade Separation Works



Project Overview, Challenges, and Solutions

- Project value: \$5.4 million. Key contractors: Talco Group, Laing O'Rourke, MRWA.
- FRP and waterproofing for two MRWA underpasses and two bridges. Structural components included abutments, wing walls, skirt beams, sill beams, bridge decks, and approach slabs.
- Complex civil works demand precision and expertise to meet engineering standards and project specifications, with strict safety protocols to safeguard the workforce and public.
- Coordinating multiple structural elements under tight schedules while maintaining quality and safety, and minimising disruption in a busy transport corridor.
- Comprehensive FRP and waterproofing services ensured the durability and longevity of bridges and underpasses, utilising advanced formwork and concrete pouring techniques to meet precise engineering requirements.
- Critical structural elements, including transition barriers and deflection walls for rail lines, were built to improve safety and regional connectivity by increasing freight efficiency and corridor performance.

▶ The Thomas Road Grade Separation Works showcases Ashbridge Construction's expertise in delivering complex civil and bridge infrastructure projects. Through precise engineering, advanced construction techniques, and strict safety protocols, the project greatly enhanced safety, connectivity, and freight efficiency in Perth's south-east corridor.

Mount Keith Mine Site Project



- ▶ The Mount Keith Mine Site project demonstrates Ashbridge Construction's expertise in delivering complex civil works with precise concrete pouring and strict adherence to safety and environmental standards in a challenging mining environment. Their logistics coordination ensures smooth project execution at remote locations, supporting sustainable technology demand.



Project Overview

- Key nickel mining site supporting worldwide sustainable technology needs.
- Complex civil engineering projects requiring precision and expertise.
- Development of industrial infrastructure in a remote location in Western Australia.
- Strict adherence to BHP's safety and environmental protocols.

Challenges

- Remote and difficult mining environment requiring specialised logistics management to ensure the prompt delivery of materials and equipment.
- High safety and environmental standards mandated by Westforce and BHP, requiring strict compliance and monitoring.
- Complex formwork systems and precise concrete pouring under tight schedules and challenging site conditions.
- A need for robust industrial structures that can support essential mining operations and infrastructure.

Solutions Implemented

- Utilised experienced teams skilled in heavy-duty industrial civil works and precise concrete pouring for foundations and equipment pads.
- Coordinated logistics carefully to handle remote location challenges and ensure prompt supply chain operations.
- Strictly followed Westforce and BHP's safety and environmental protocols with continuous risk management and safety training.
- Utilised durable formwork systems engineered for industrial use under tight schedules, ensuring quality and compliance.

Kemerton Lithium Mine Project



Challenges



Working in a remote, challenging environment demanded detailed logistics for materials and workforce. Strict Civmec, DCL and BHP safety and environmental protocols required full compliance and risk management. Tight schedules and the necessity for durable, high-quality formwork and concrete solutions ensured long-term integrity.

Solutions Implemented



High-durability formwork systems designed for industrial use, capable of withstanding heavy-duty operation and environmental conditions. Precise concrete pouring ensures equipment pads meet strict specifications. Safety and quality systems are aligned with BHP standards, supported by ongoing training and optimised logistics for prompt delivery.

- ▶ Ashbridge Construction delivered durable, high-quality industrial infrastructure at Kemerton Lithium Mine, supporting WA's clean energy supply chain with precision and strict safety standards.



Contact Ashbridge Construction

Contact Information for Ashbridge Construction

- Email for tenders and inquiries: tenders@ashbridgeconstruction.com.au
- Official website: <http://www.ashbridgeconstruction.com.au/>
- **Managing Director Ashley Gallagher 0487 652 762**
- Postal address: P.O Box 201, Herne Hill, Western Australia 6056
- Australian Business Number (ABN): 20 669 482 357
- Located at WA Head Office: 256 Haddrill Rd, Baskerville, WA 6056
- Dependable contact for project discussions, quotations, and service requests
- Direct communication channels guarantee prompt responses and effective management of client needs
- The website offers detailed information on services, projects, and company updates.
- All correspondence is managed professionally to maintain client and partner relationships.





ASHBRIDGE
CONSTRUCTION



Copyright 2025